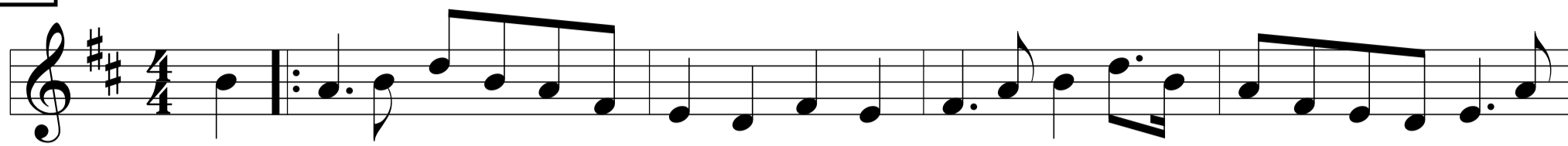


# Ardgarth Cottage

Colin Bradford, 1987

**A**



**D Bm G A7 F#m G D G Em A7**



**D Bm Em F#7 G A7 G D**

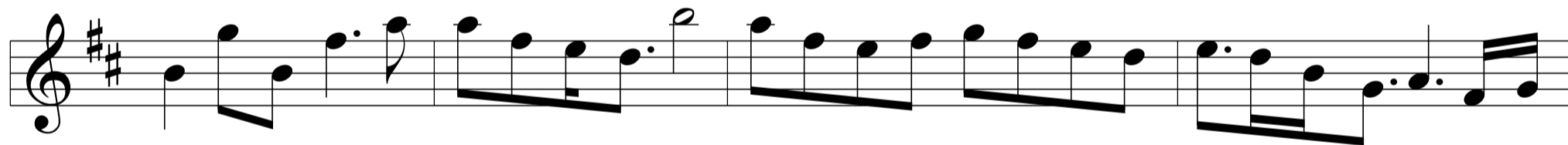


**D Bm G A7 F#m G D G Em A7**



**F#m Bm Em D7 G A7 G D**

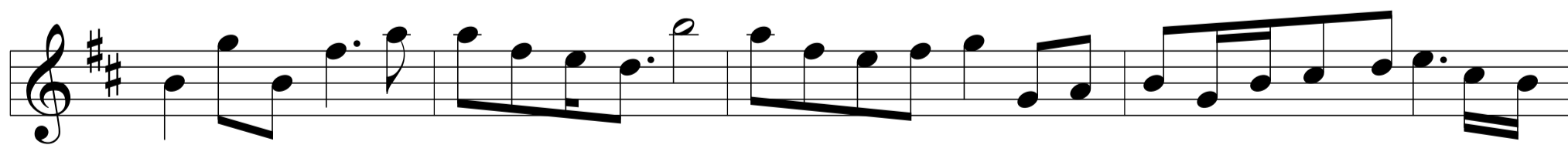
**B**



**G A7 D G F#m Em G A7**



**F#m Bm Em F#7 G A7 G D**



**G A7 D G F#m Em G A7**



*LAST TIME: Rall.*

**1,2 - to [A] 3**

**F#m Bm Em D7 G A7 G D G D**